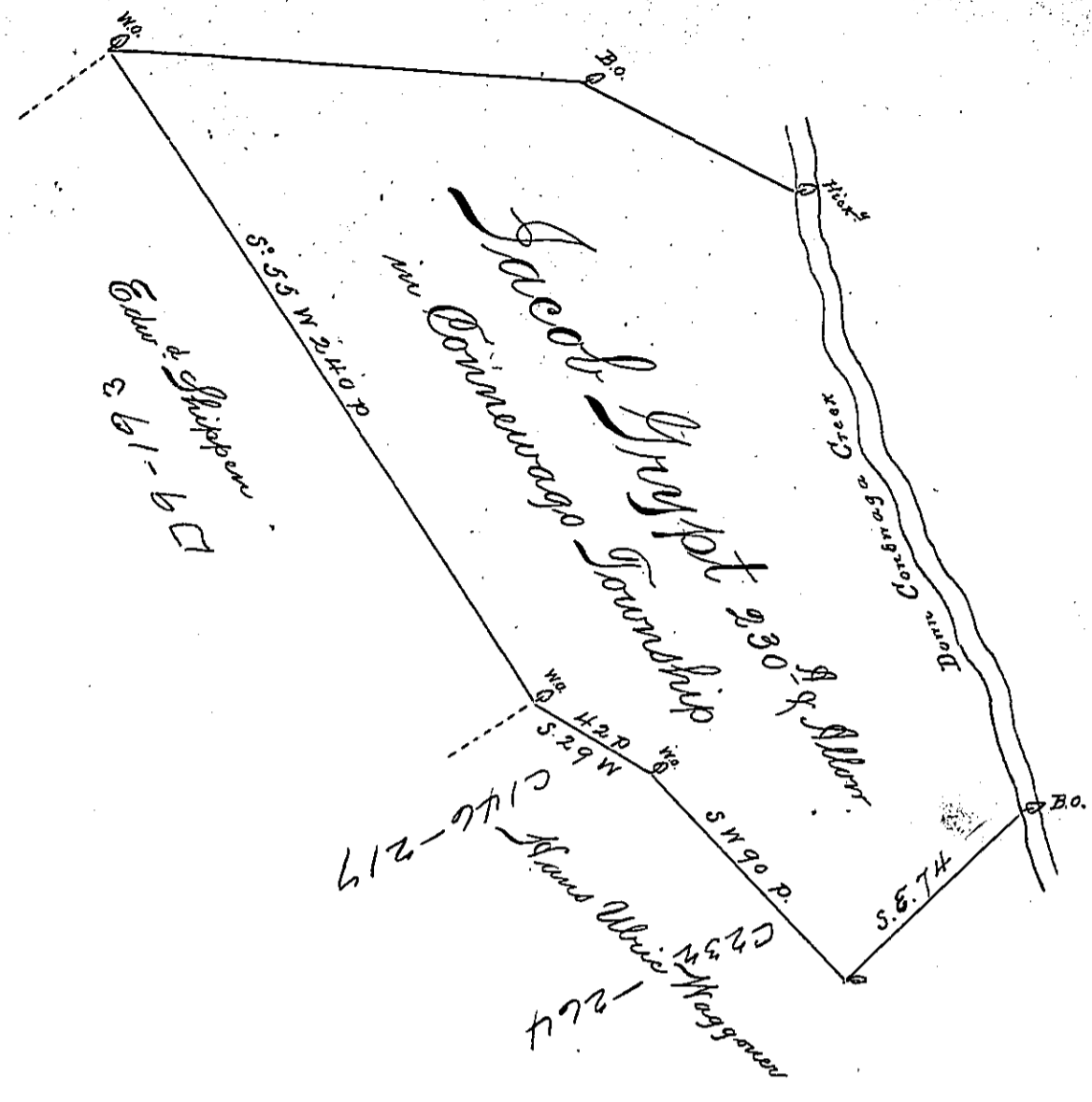


Jeremiah Stillwell



A Draught of a Tract of Land situate on Great
 Conewago Creek in Manchester Township Lancas-
 ter County containing two hundred & thirty Acres
 & allowance of Six p Cent for Roads &c. Surveyed
 the 20th day of October 1745 to Jacob Grypt
 by Virtue of a Warr^t from y^e Honble Proprie-
 taries bearing date the 18th day of February 1743
 Tho: Cookson D.S.

To Mr W^m Parsons }
 Surv^r Gen^l }

IN TESTIMONY that the above is a copy of the original remaining on file in the
 Department of Internal Affairs of Pennsylvania, made con-
 formably to an Act of Assembly approved the 16th day of
 February, 1833, I have hereunto set my Hand and caused
 the Seal of said Department to be affixed at Harrisburg, this
 fifth day of May 1896.

James W Latta
 Secretary of Internal Affairs.